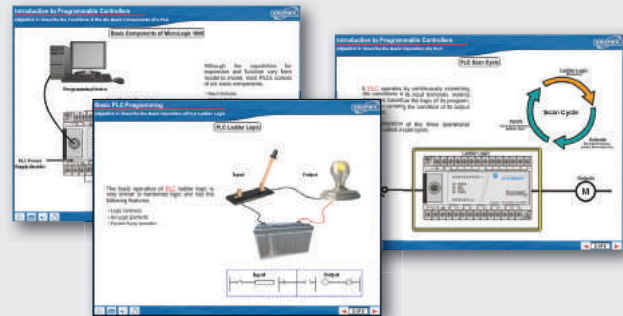


MULTIMEDIA CURRICULUM INCLUDES PLC PROGRAMMING INSTRUCTION PLUS MECHATRONIC SYSTEM OPERATION!

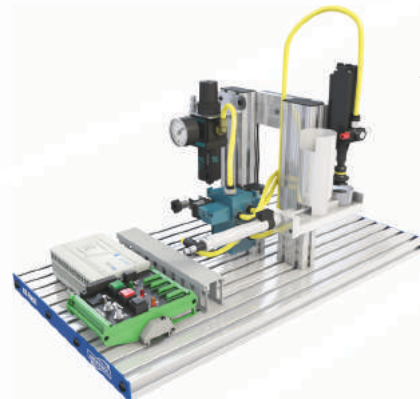
PLC PROGRAMMING CURRICULUM



- Automation Operations
 - Introduction to Mechatronics
 - Control System Concepts
 - Mechatronics Safety
 - Machine Operator Functions
- Introduction to Programmable Controllers
 - PLC Orientation
 - PLC Operation
 - PLC Programming Languages
- Basic PLC Programming
 - Numbering Systems
 - PLC Programming Software
 - PLC Program Analysis
- PLC Motor Control
 - Motor Control Basics
 - Seal-In Program Logic
 - Interlock Functions
 - Documentation & Advanced Editing
 - Program Development
- PLC Counter and Timer Instructions
 - Timer Instructions
 - Time-Driven Sequencing
 - Count Up Instructions

MECHATRONIC STATION CURRICULUM

Each station includes push button start/stop, on/off switch, quick connect terminal with test points, and PLC.



INVENTORY FEEDING

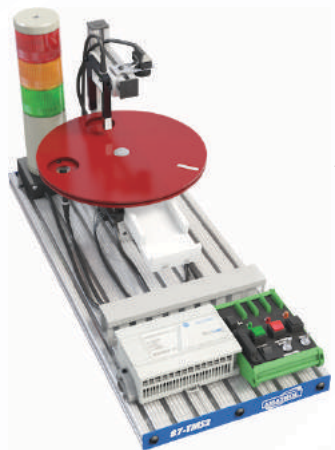
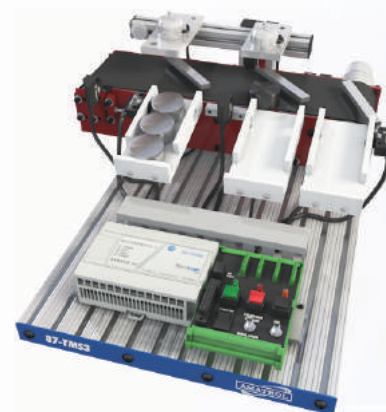
Station 1 (87-TMS1)

- Pick and Place Feeding
 - Material Feeding Systems
 - Powered Parts Feeder Operation
 - Pick and Place Pneumatic Manipulation
 - Electro-Pneumatic Valve Adjustment
 - Pneumatic Actuator Speed Adjustment
 - Vacuum Adjustment
 - Introduction to Event Sequencing
- Event Sequencing
 - Continuous Cycle Logic
 - Stop Functions
 - Multiple Actuator Sequencing
 - Pneumatic Manipulator Sequencing
 - Pick and Place Feeding Sequencing

SORTING & DISTRIBUTION

Station 3 (87-TMS3)

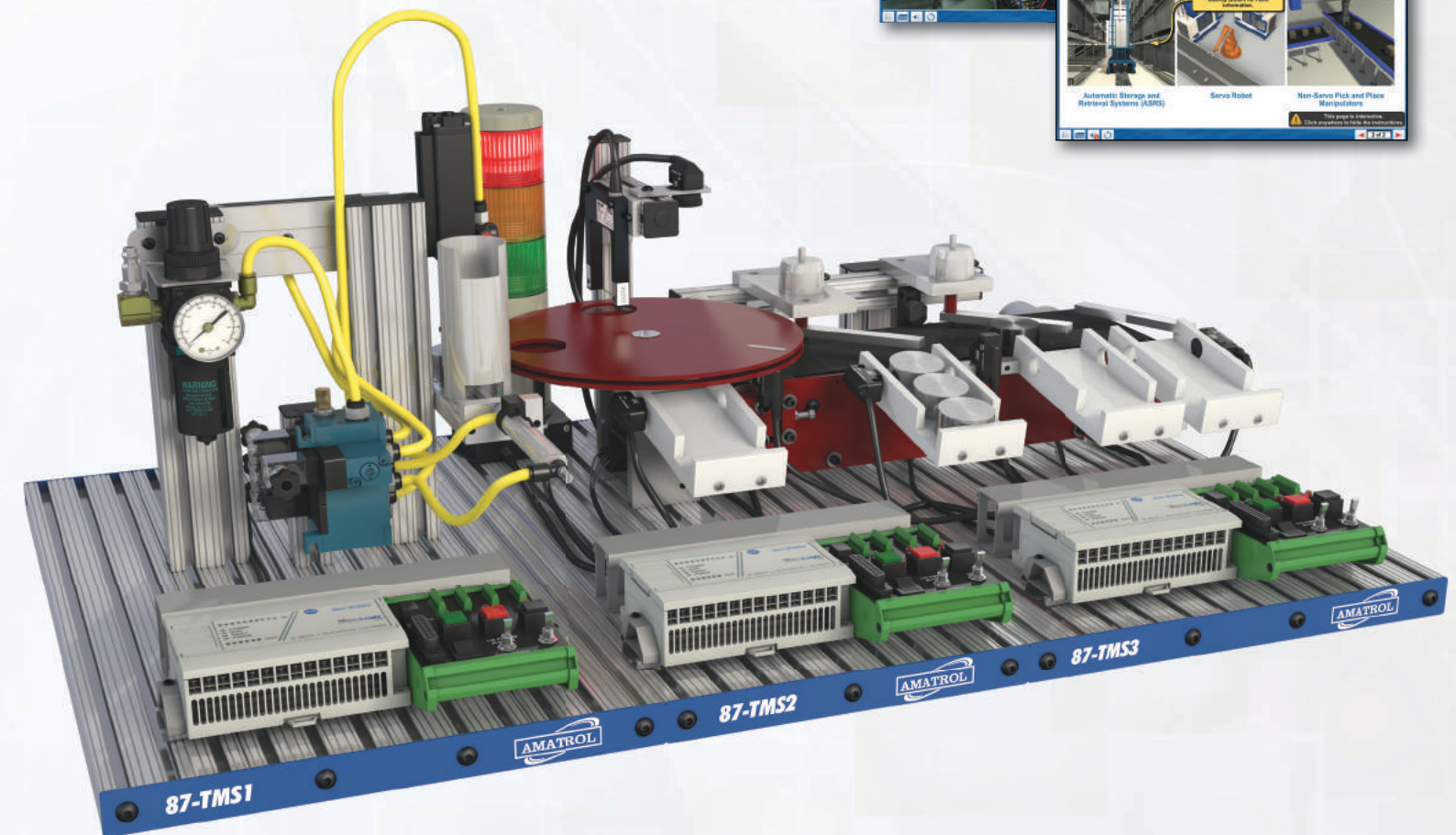
- Sorting and Parts Storage
 - Sorting Module Operation
 - Parts Storage Operation
 - Flat Belt Conveyor Adjustment
 - Thru-Beam Photoelectric Adjustment
 - Sorting Module Sequencing
 - Multiple Station Operation



INSPECTION & INDEXING

Station 2 (87-TMS2)

- Indexing
 - Index Station Operation
 - Adjustment of Fork, Homing, and Proximity Sensors
 - Stepper Motor Programming
 - Homing Sensor Adjustment
 - Stepper Motor Index Table Sequencing
 - Index Station Sequencing



TABLETOP MECHATRONICS

**POWERFUL AUTOMATION TRAINING
FOR PLC, ELECTRICAL, MECHANICAL
AND PNEUMATIC APPLICATIONS!**



PRINTED IN U.S.A. • COPYRIGHT ©2013 • FORM 7049-A

2400 Centennial Blvd.
Jeffersonville, Indiana 47130 U.S.A.
Phone: 812.288.8285 • Fax: 812.283.1584
Toll Free in USA & Canada: 800.264.8285
Email: contact@amatrol.com • www.amatrol.com

EACH STATION IS A COMPLETE LEARNING SYSTEM WITH DIFFERENT TECHNOLOGIES!



Interactive Multimedia Curriculum

INVENTORY FEEDING

Station 1 (87-TMS1)

- Pick and place feeding
- Electro-pneumatic actuators
- Magnetic, reed, vacuum sensors
- 3-Axis pneumatic actuator system
- Vacuum pick-up
- Vacuum sensor
- Vacinator

INSPECTION AND INDEXING

Station 2 (87-TMS2)

- Multi-color stack light
- Retro-reflective, inductive, and fork sensors
- Stepper motor index table actuator

SORTING AND DISTRIBUTION

Station 3 (87-TMS3)

- Inductive, thru-beam, and retro-reflective sensors
- Electric solenoid actuators
- Flat belt conveyor with DC motor

Station Combinations	Amatrol Tabletop Stations		
	87-TMS1	87-TMS2	87-TMS3
Feeding			
Inspection			
Distribution			
Feeding and Inspection			
Feeding and Distribution			
Inspection and Distribution			
Feeding, Inspection and Distribution			

Any Station Can Be Combined With Another!

Heavy Duty Industrial Components for Long Life

Plug and Play Interchangeable Controllers with Single Quick Connect

Safe 24 VDC Power

Dual Function: Operator Station and I/O Simulator for PLC Training

87-TMS1



87-TMS2



87-TMS3



Modular - start with one station and add others as budget allows

Use stations individually or combine stations for a complete automation process!